



# Berkshire East JSNA Update

## Slough Wellbeing Board

29<sup>th</sup> September 2021

# What is a Joint Strategic Needs Assessment?

Local authorities and local NHS have had a statutory duty to produce a Joint Strategic Needs Assessment (JSNA) since 2007. In 2012 responsibility for JSNA was placed with the local Health and Wellbeing Board.

The Joint Strategic Needs Assessment (JSNA) is a process which local authorities and CCGs use to assess the current and future health, care and wellbeing needs of the local community to inform decision making.

Joint Health & Wellbeing Strategies should be based on the priorities identified through local JSNAs and be transparent and available to the public.

# Berkshire East's Approach to the JSNA

Following the restructure of the local Public Health system in April 2021, the Berkshire East Public Health Teams discussed the future direction for JSNA's across Bracknell Forest, Slough and the Royal Borough of Windsor & Maidenhead.

The Berkshire Shared Vision and principles for JSNAs were reviewed and re-agreed for the Berkshire East footprint. Local authorities all confirmed that they wanted to work on their JSNAs collaboratively, while still keeping distinct analyses and outputs separate for each LA area.

The Berkshire East Public Health Hub was asked to lead this project, on behalf of the whole Berkshire East system, and a JSNA Steering Group was set-up.

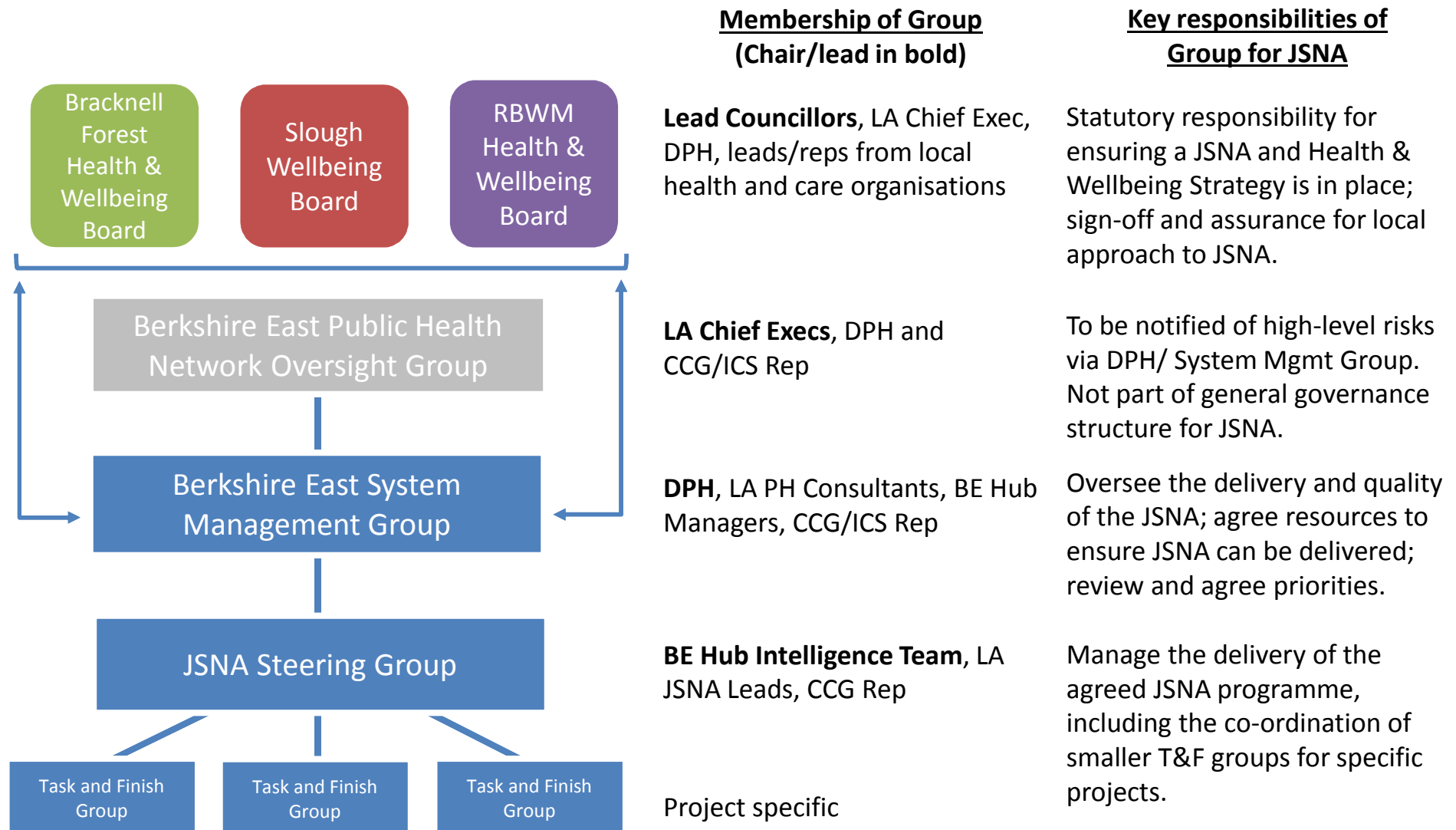
The key deliverable for the JSNA Steering Group was to **create a Berkshire East JSNA website by the end of 2021/22 that met the agreed Shared Vision and principles**. This should include a suite of resources to identify and evidence local health and wellbeing priorities that would guide decision making.

## Our JSNAs will be...

**Accessible** **Agile**  
A mix of published and self-generated resources  
**In parallel with population health management** **Local**  
Coherent with other health intelligence systems  
**Informed by detailed needs assessment**  
**Responsive to change**  
Reflective of the views of residents  
**Collaborative** **Useful**  
**Relevant to our populations**

# Governance Structure for Berkshire East JSNA

The following governance structure has been developed to ensure that Berkshire East's JSNAs are delivered appropriately in order that priorities can be shaped by the identified needs of local people.



# Key milestones for JSNA Development

The JSNA Steering Group has already completed several key milestones and aims to launch the Berkshire East JSNA in December 2021. The key focus over the next 3 months is to develop the JSNA website, create analyses for prioritised sections and ensure colleagues across the local authorities, CCG, ICS and wider voluntary and community groups are engaged in the process.

